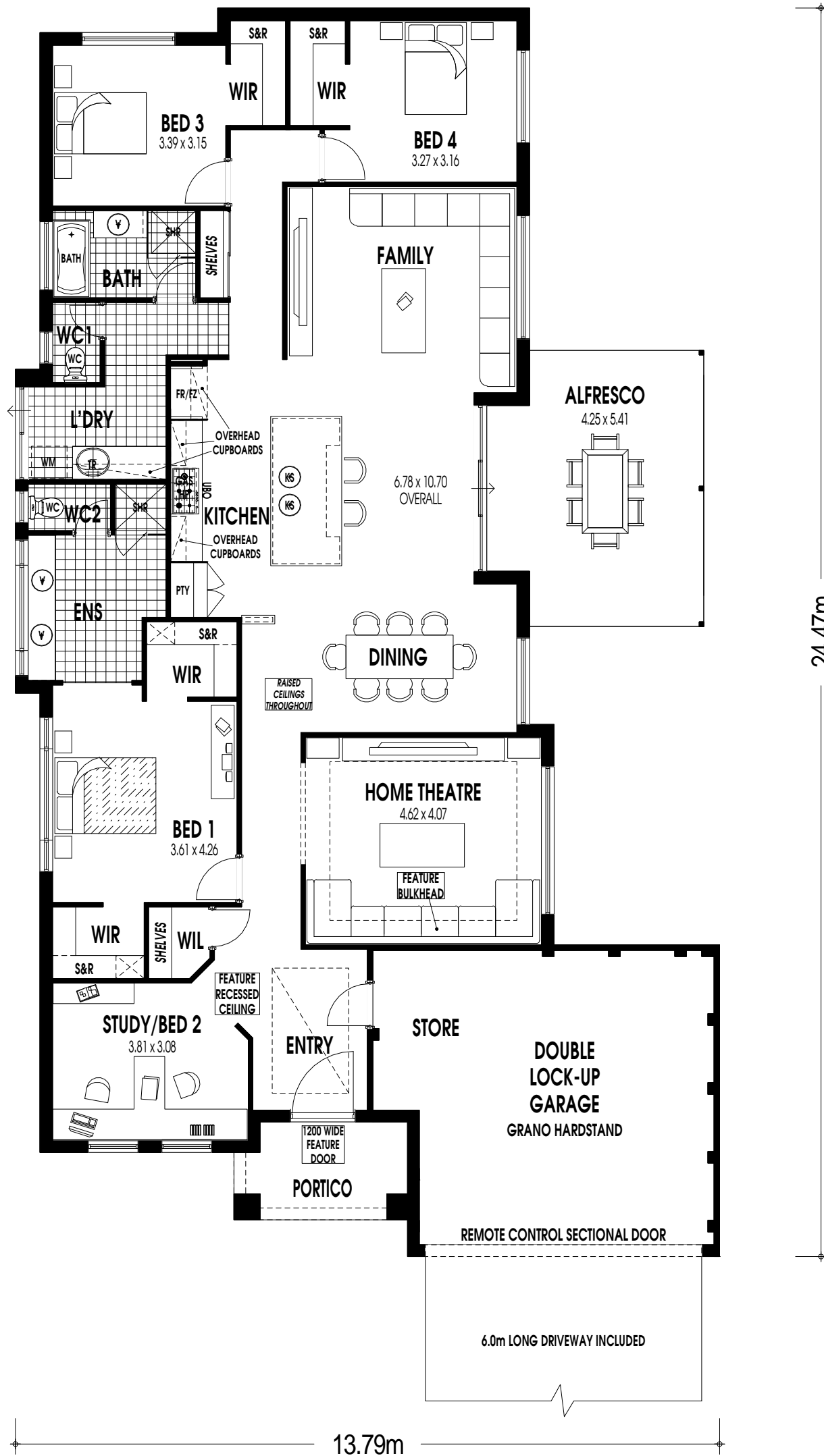


HOUSE 202.394m²
 GARAGE 39.301m²
 ALFRESCO 21.178m²
 PORTICO 6.222m²
TOTAL AREA 269.094m²

'MONTREAL'
 - ON DISPLAY AT 'ST LEONARDS' ESTATE, DAYTON

Content
 LIVING
 The Home Builders

ABN 071 055 245 308
 6 Gould Street,
 Osborne Park W.A. 6017
 P.O. Box 1101
 Osborne Park W.A. 6917
 PH (08) 9202 5222
 FAX (08) 9202 5233



HOUSE 202.394m²
 GARAGE 39.301m²
 ALFRESCO 21.178m²
 PORTICO 6.222m²
TOTAL AREA 269.094m²

'MONTREAL'
 - ON DISPLAY AT 'ST LEONARDS' ESTATE, DAYTON

Content
 LIVING
 The Home Builders

ABN 071 055 245 308
 6 Gould Street,
 Osborne Park W.A. 6017
 P.O. Box 1101
 Osborne Park W.A. 6917
 PH (08) 9202 5222
 FAX (08) 9202 5233